

# ARKO FLOOR MOUNT

## CERAMIC TOILET SUITE

### Floor mount toilet suite – Clean Flush, Nanoglaze

Sleek style and efficient performance in a premium space-saving toilet system with hidden cistern and pneumatic flush.



#### Pan - details:

- Stylish minimalist design with curved pan, sits flat against wall
- Clean Flush rimless pan design for an efficient, powerful flush
- White vitreous china with nanoglaze surface, easy to clean
- Soft-closing, easy-clean quick release seat with stainless steel pins
- S or P trap

#### C100 slim in-wall cistern - details:

- Hidden cistern activated through a premium pneumatic system connected to the flush plate buttons
- Fully insulated with anti-condensation foam to prevent moisture escape
- Easy to install and service through the flush plate
- WELS 4 star 4.5/3L water saving flush
- Undercounter cistern is also available on request.

#### ORDER CODE **TOILET SUITE — Includes pan and C100 slim in-wall cistern\***

191768	Arko FM suite, Deluxe seat	[old code: STO-306-13]
191765	Arko FM suite, Slim seat	[old code: STO-306-10]
191767	Arko FM suite, Flat seat	[old code: n/a]
191766	Arko FM suite, Classic seat	[old code: STO-306-11]

#### **PAN AND SEAT ONLY (no cistern)**

191764	Arko FM pan, Deluxe seat	[old code: STO-306-04]
191761	Arko FM pan, Slim seat	[old code: STO-306-00]
191763	Arko FM pan, Flat seat	[old code: n/a]
191762	Arko FM pan, Classic seat	[old code: STO-306-01]

Order flush buttons separately.

PAN	Wall faced with rimless Clean Flush pan design.
MATERIAL	White vitreous china.
TRAPS	Universal trap, suitable for S or P trap installations.
SEAT	Quick release seat with stainless steel hinges, soft closing.
SETOUT	Variable 90-120 mm using supplied connector.
FIXING	Pan may be bedded with cement base or using silicone sealant.

### TOILET SEAT OPTIONS



- DELUXE SEAT (40mm lid)**
- Premium quality
  - Easy to clean, anti-scratch
  - Rigid, ceramic-like surface
  - Made from Thermoset (UF)



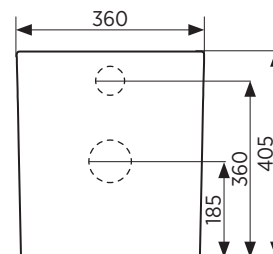
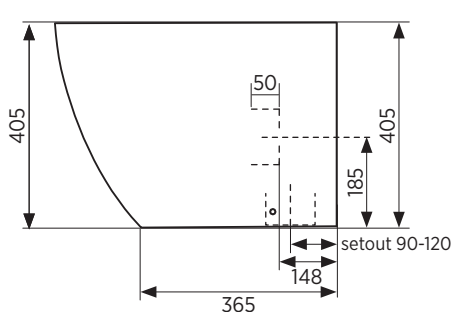
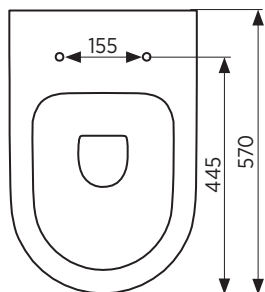
- SLIM SEAT (20mm lid)**
- Premium quality
  - Easy to clean, anti-scratch
  - Rigid, ceramic-like surface
  - Made from Thermoset (UF)



- FLAT SEAT**
- Premium quality
  - Easy to clean, anti-scratch
  - Rigid, ceramic-like surface
  - Made from Thermoset (UF)



- CLASSIC SEAT (40mm lid)**
- Lightweight, shiny finish
  - Easy to clean
  - Rigid, ceramic-like surface
  - Made from Thermoplastic (PP)



 Rimless Clean Flush pan - for an efficient, powerful flush.  Nanoglaze surface - ultra-smooth, anti-bacterial, easy to clean.

# SEIMA

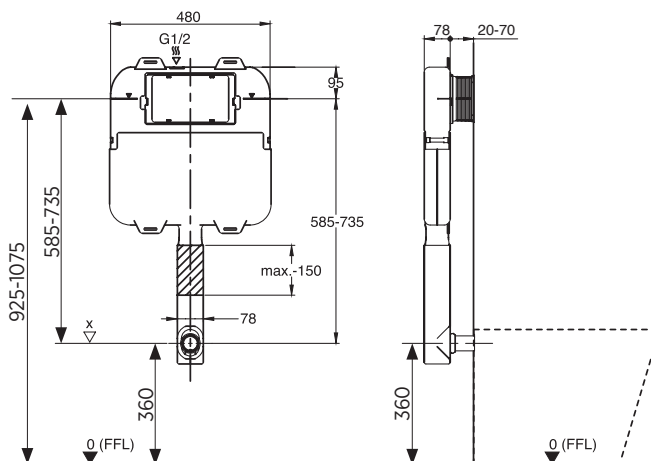
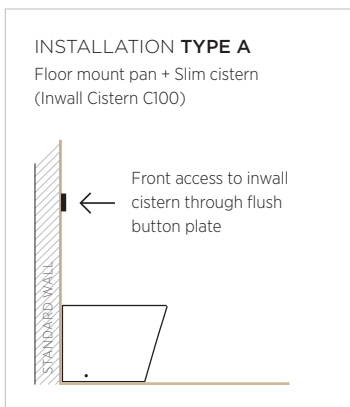
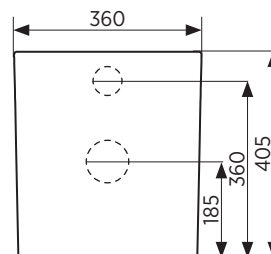
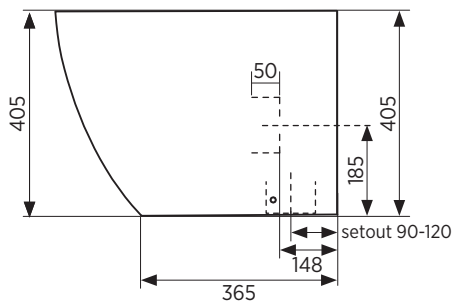
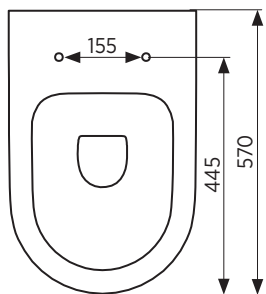
bathroom | kitchen | laundry

seima.com.au

#### Please note

- Installation shall be in accordance with AS/NZS3500.
- All measurements are in millimetres. Height dimensions are to base of pan. Make allowance for bedding.
- Bedding: Pan may be bedded with cement base or using silicone sealant. Fix pan to floor using a sand cement mixture of 3:1 to a depth of 60mm. Do not use lime or fast-drying cement.
- Bracket fixing: The pan should be bedded with silicone sealant and fixed with the brackets supplied. Do NOT use epoxy type adhesives.
- Dimensions are nominal and subject to normal ceramic manufacturing variations.
- Specifications may vary without notice as part of our continuous improvement practices.
- Clean with a damp cloth. Do not use abrasive cleaners, liquids or pastes.

## ARKO FLOOR MOUNT PAN + C100 IN-WALL SLIM CISTERN



**Please note**

- Installation shall be in accordance with AS/NZS3500.
- All measurements are in millimetres. Height dimensions are to base of pan. Make allowance for bedding.
- Bedding: Pan may be bedded with cement base or using silicone sealant.  
Fix pan to floor using a sand cement mixture of 3:1 to a depth of 60mm. Do not use lime or fast-drying cement.
- Bracket fixing: The pan should be bedded with silicone sealant and fixed with the brackets supplied.  
Do NOT use epoxy type adhesives.
- Dimensions are nominal and subject to normal ceramic manufacturing variations.
- Specifications may vary without notice as part of our continuous improvement practices.
- Clean with a damp cloth. Do not use abrasive cleaners, liquids or pastes.